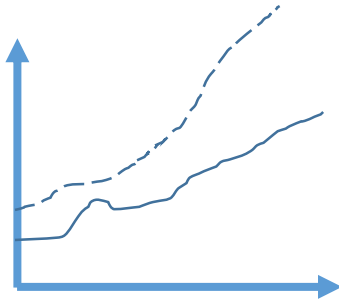


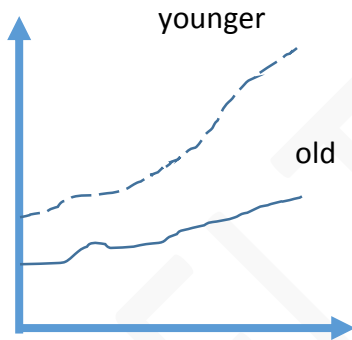
Line graph (Lesson 2)

2. Overview

H.....



- One line is always than the other (order)
- Both lines go (trend)
- The gap between the lines

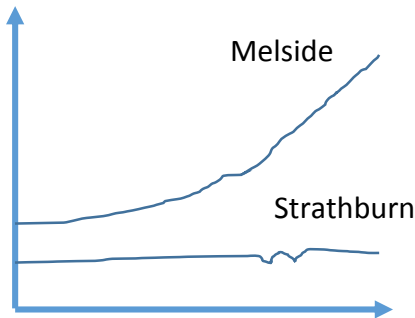


- The figures for younger people were always higher than those for older people
- Both younger and older people go to the cinema in increasing numbers
- ...especially younger people

Cinema visits for 2 age groups

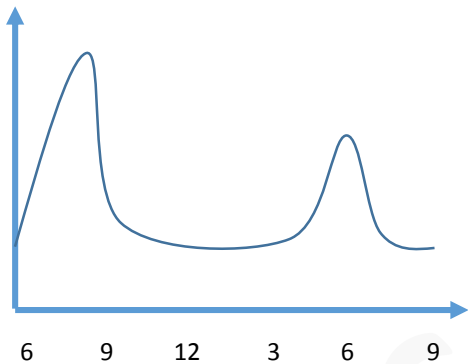
- Over the period shown, these establishments experience among all
- However, it is the young who always have the greatest for this form of

O.....



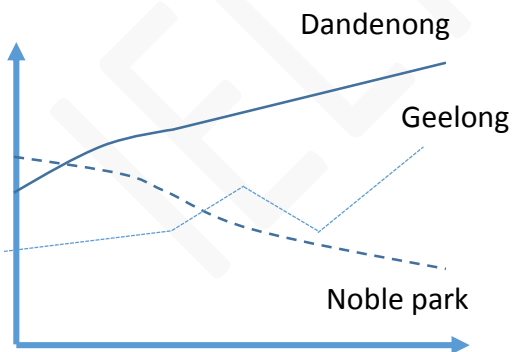
Absenteeism at two high schools

- Over the whole period, absenteeism at Strathburn remains and unchanged,
- Whereas Melside holds a bigger and worsening problem, seeing a number of student's not school



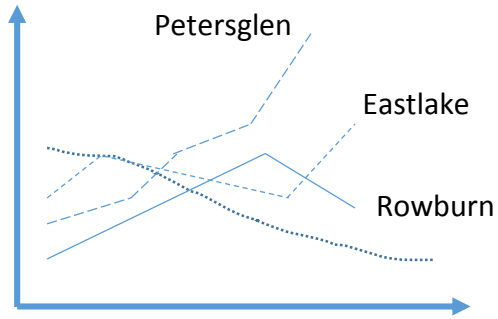
People entering Noble park railway station over a 150 hour period

- Generally speaking, this establishment is at two distinct times: and



Profit figures for three football clubs

- Over the period shown, Dandenong is generally the most successful, generating increasingly higher,
- Whereas the other two clubs suffered



Number of students enrolled at 4 Universities

- Over the whole period, Petersglen university proved by far the most, with its expanding considerably.
- Eastlake and Rowburn also experienced growths, while CMT's number as time went by.

IELTS Fighter

IELTS Fighter